

#### NORTH AMERICA DISTRIBUTORS



**FORMWORK SERVICES & SUPPLY**  
Midwest / Southeast  
[formworkservices.com](http://formworkservices.com)



**AFS—ADVANCED FORMWORK SOLUTIONS**  
Washington, Oregon and Idaho  
[advancedformingsolutions.com](http://advancedformingsolutions.com)



**CSI SHORING, INC.**  
Southern California and Las Vegas  
[csishoring.com](http://csishoring.com)



**FOR-SHOR**  
Utah  
[forshor.com](http://forshor.com)



**ATLAS SALES**  
Hawaii & Guam  
[atlas-sales.com](http://atlas-sales.com)



**ALUMA SYSTEMS**  
Global  
[aluma.com/us/](http://aluma.com/us/)



#### Pro-Shore, LLC

East Coast: 954 415 3693  
West Coast: 510 965 8170  
Add: 1636 Pacific Street Union City, CA 94587  
Tel: (209)636-2770  
E-mail: [info@pro-shore.net](mailto:info@pro-shore.net)  
Web: [www.pro-shore.com](http://www.pro-shore.com)



# TILT-UP, WALL & COLUMN BRACING



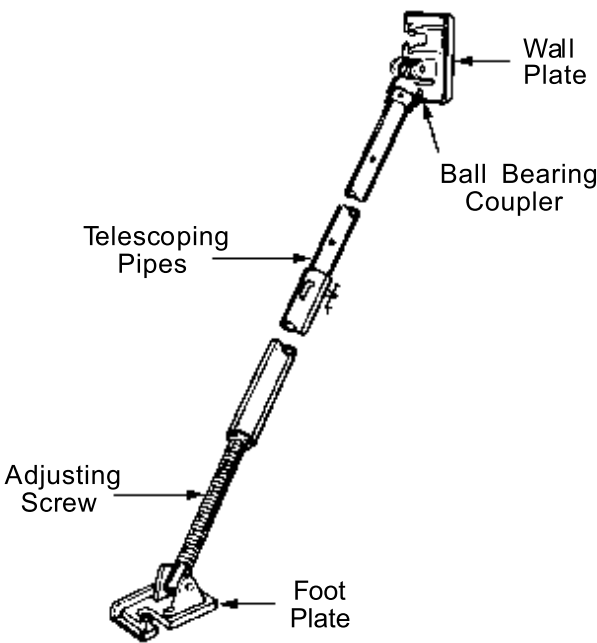
[www.pro-shore.com](http://www.pro-shore.com)

PS Tilt-Up Wall Braces

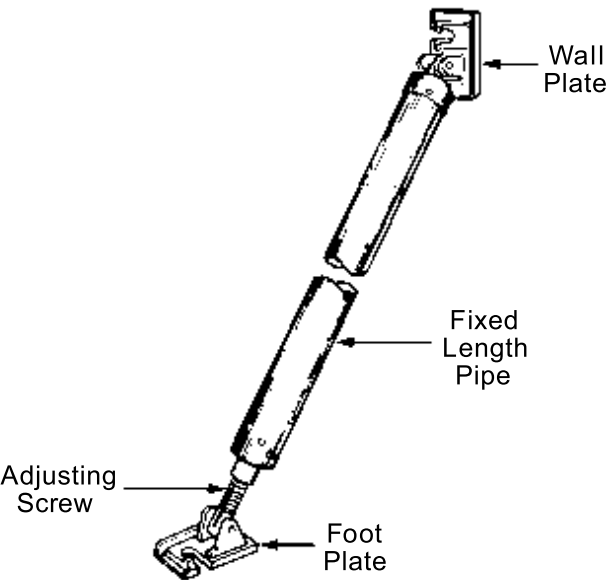
The PS Tilt-Up Wall Braces are all steel, heavy duty wall braces designed to quickly and easily align and brace tilt-up wall panels. Rough adjustment of the braces is very easily accomplished by telescoping the pipes to the nearest incremental hole.

Final adjustment is then achieved by simply turning the brace. We have different braces for your different length and load Choice. Refer to the table below for additional information.

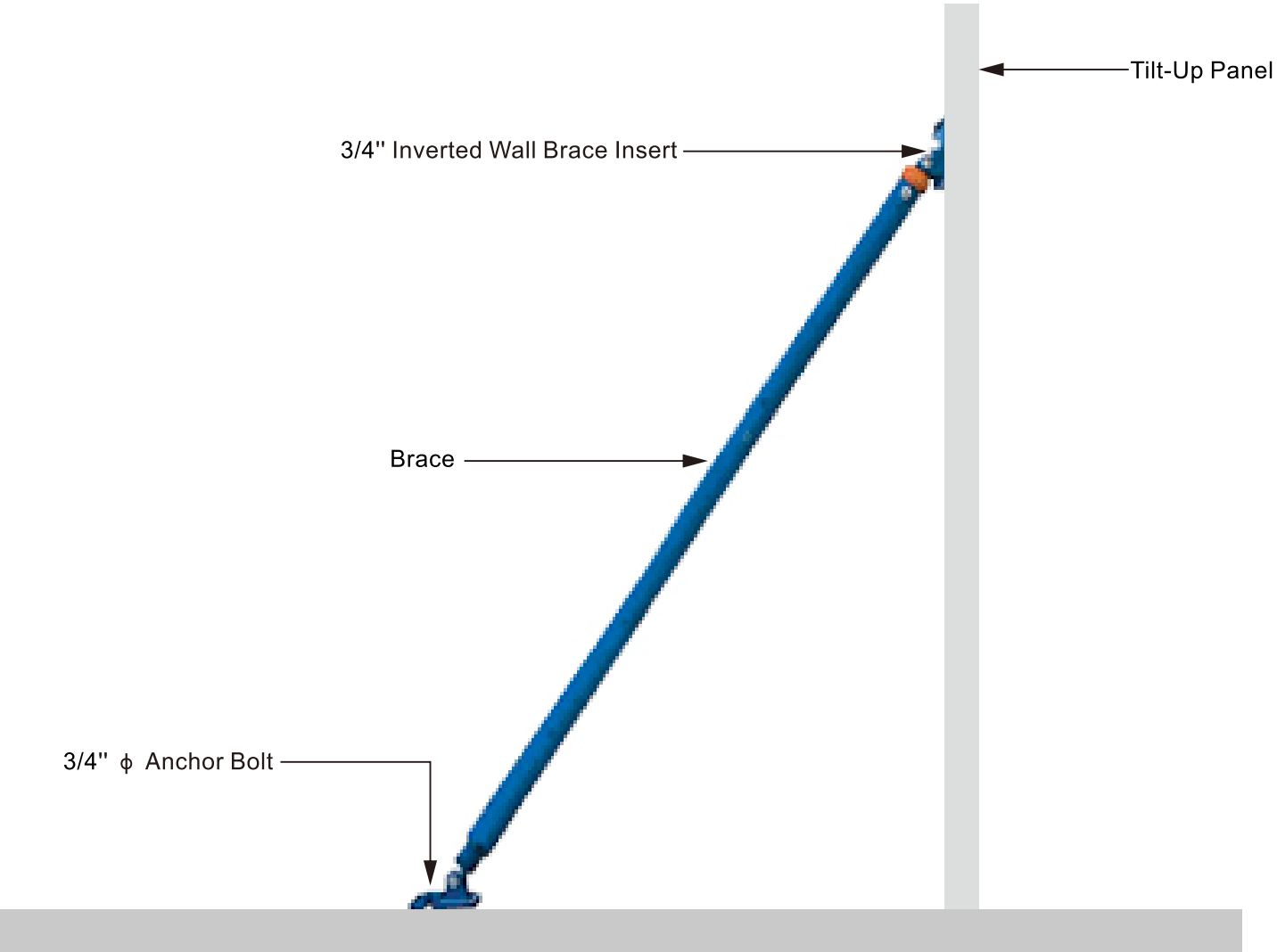
PS Tilt-Up Pipe Brace



PS Tilt-Up Jumbo Brace

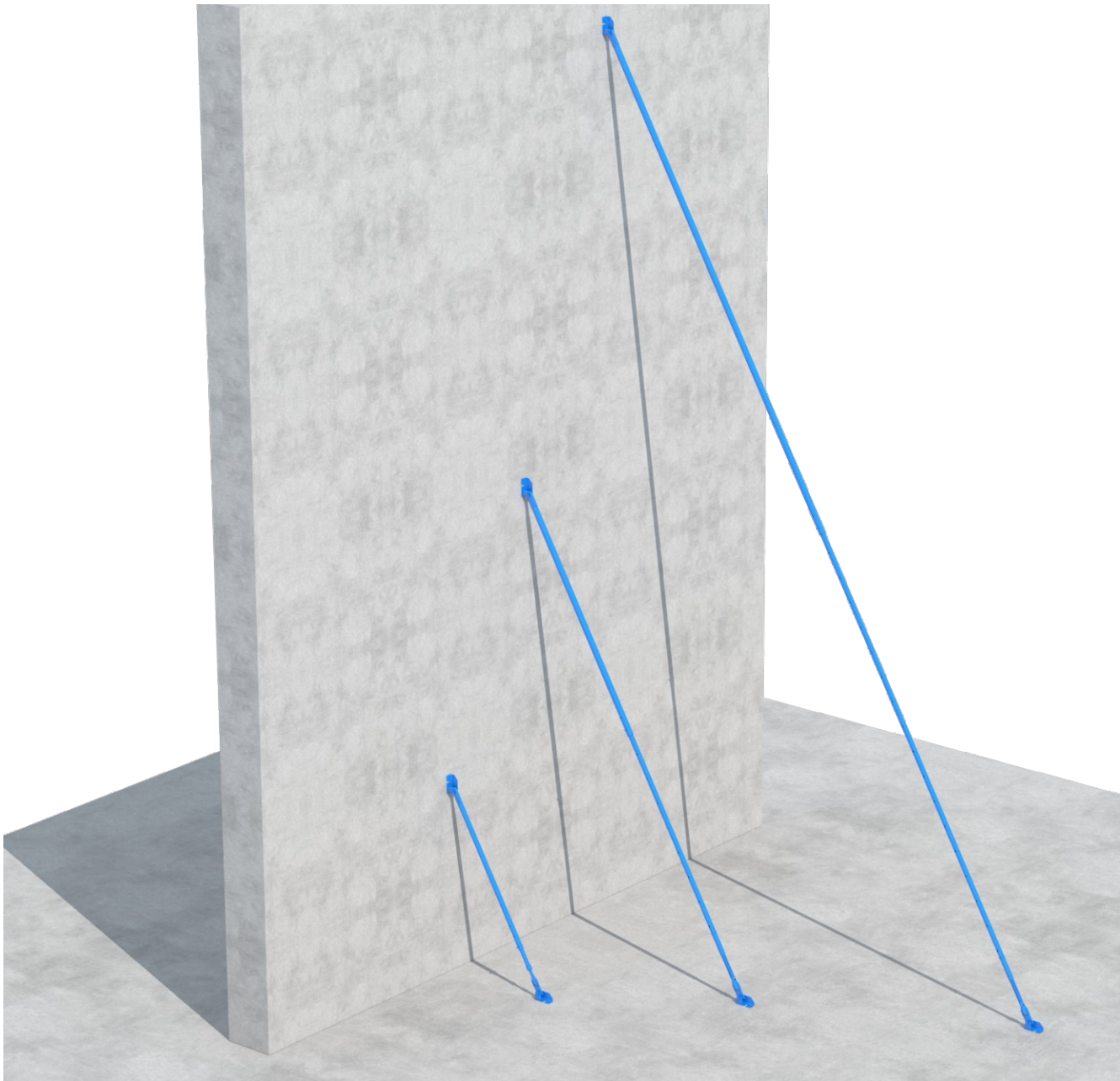


Description	Min Length	Max Length	Ult. Load (Lbs)	Brace Wt. (Lbs)
PS B4 Tilt-Up Pipe Brace	14'6"	23'6"	9,750-2,525	140.2
PS B5 Tilt-Up Pipe Brace	22'6"	30'10"	8,962-2,025	225.7
PS B12A Tilt-Up Jumbo Brace	31'3"	32'9"	13,500	252.2

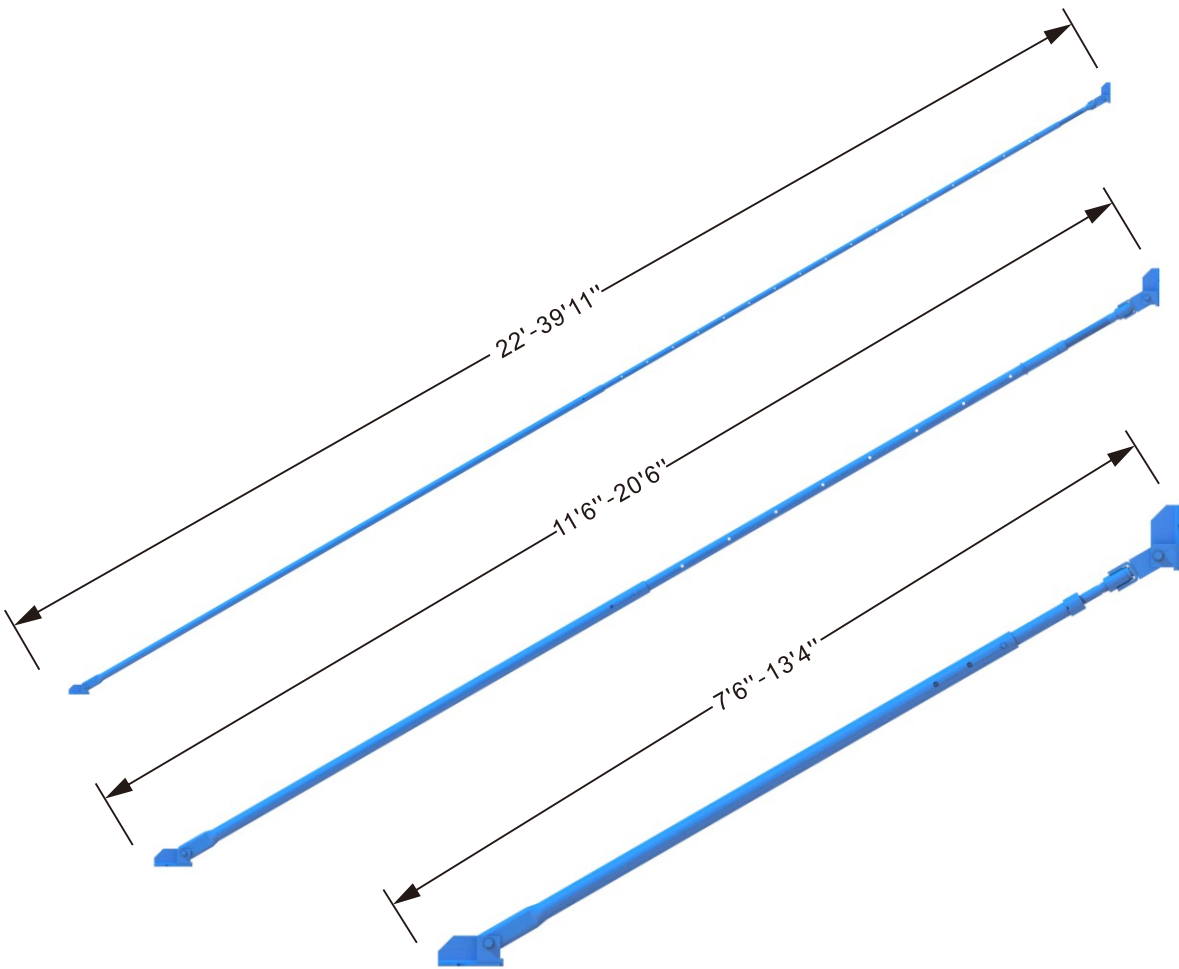




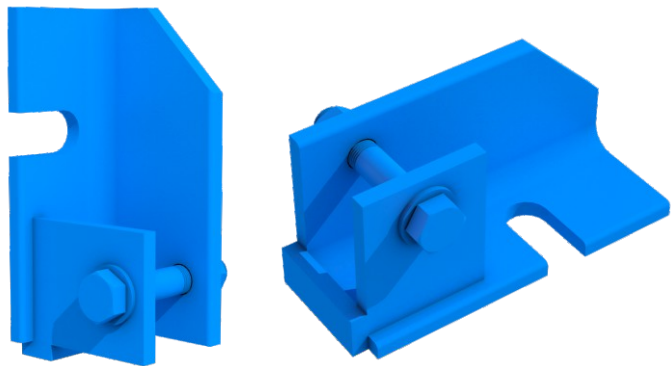
PS Adjustable Wall Brace



- A fast and safe way to brace and align Walls.
- No need for costly and time consuming lumber bracing.
- Different sizes are availbale, from 7'6" to 39' 11".



Description	Min Length	Max Length	Brace Wt. (Lbs)	Ultimate Brace Load(Lbs) W/o Knee Bracing (Max.)
Light Duty Adjustable Wall Brace	7'6"	13'4"	68.86	9,750/6,600 Lbs
Heavy Duty Adjustable Wall Brace	11'6"	20'6"	115.06	9,750/3,200Lbs
XL HD Adjustable Wall Brace	22'	39'11"	206.50	9,750/not recommended

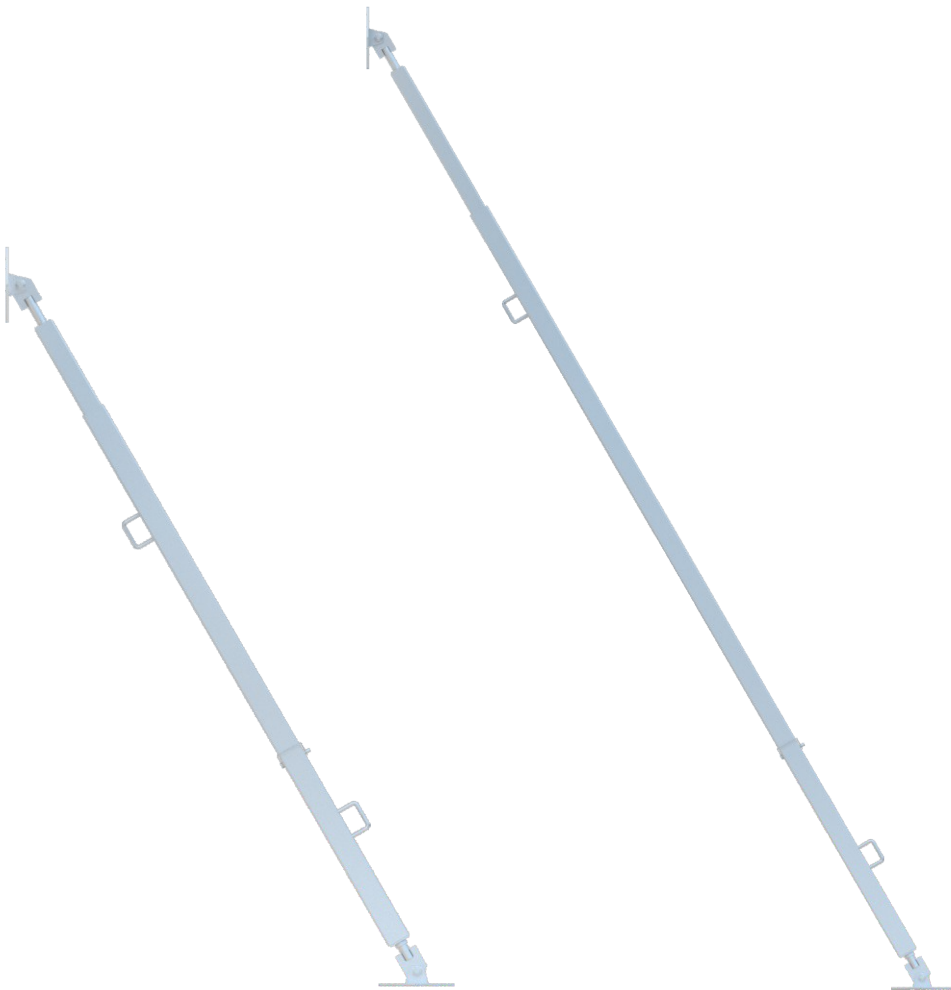


Description	Brace Wt. (Lbs)
Wall Brace Clip	8.58

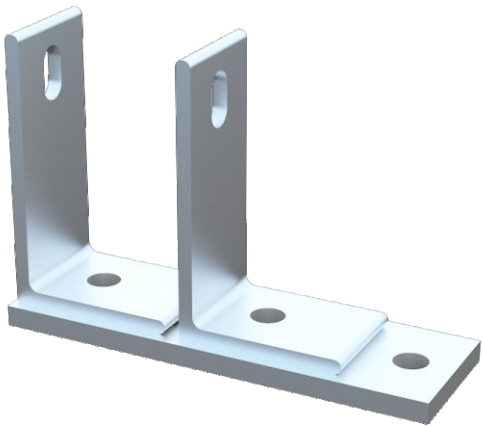
PS Column Brace



- Flexible and accurate adjustment, 1" increment is allowable at this brace.
- Strong square steel makes it greater strength, fewer braces and inserts.
- The fast thread handle design make the adjustable Pipe brace simple and easy to use.



Description	Min Length	Max Length	Brace Wt. (Lbs)
Light Duty Column Brace	6'6.7"	11'5.5"	53.20
Heavy Duty Column Brace	10'7"	18'8.8"	78.70



Description	Brace Wt. (Lbs)
Column Concrete Brace Shoe	4.50